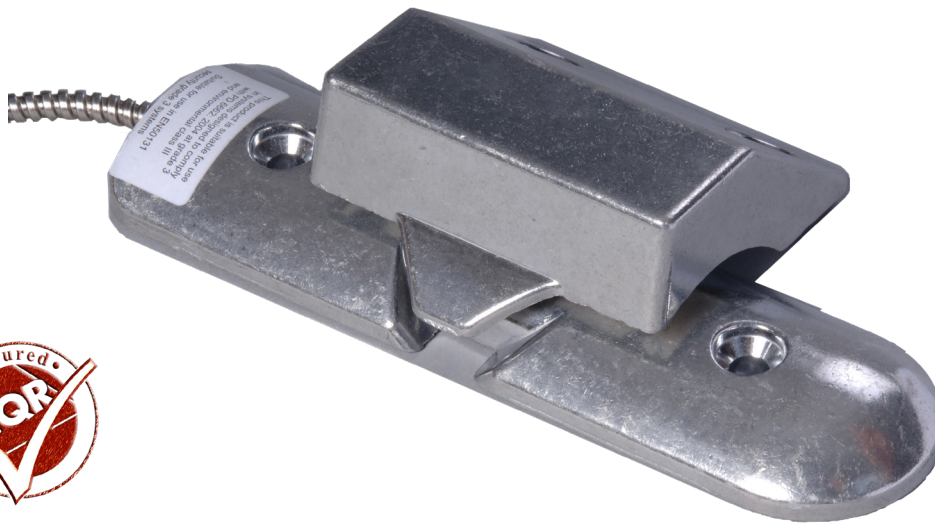


# RS007/G3/AB

## Heavy Duty Roller Shutter

# CQR

First choice for quality



- High Quality Alloy Finish
- Selectable (A,B)
- Other resistor value available
- Locating mechanism to aid alignment
- 45cm Armoured cable lengths
- EN50131-2-6 Grade 3
- Environmental Class III

### Product codes

Code	Description
RS007/G2/AB	RS007 Contact Type A & B G2
RS007/G3/A	RS007 Contact Type A G3
RS007/G3/AB	RS007 Contact Type A & B G3

### Technical data

Connections	8 Core x 7/0.2 Copper Cable
Armoured Cable Length	450mm
Reed Switches	1
Pull-in Gap	23mm
Material	Aluminium
Contact Size	170 x 50 x 13mm
Magnet Size	85 x 70 x 30mm
Contact Form	SPST form A
Voltage Range	12Vdc
Switching Current	500mA @ 12Vdc
Contact Material	Rhodium & Ruthenium
Colours	Aluminium
Magnetic Detection	Yes
Standards	EN50131-2-6 Grade 3
Environmental Class	III

rev. 1-1/2018

