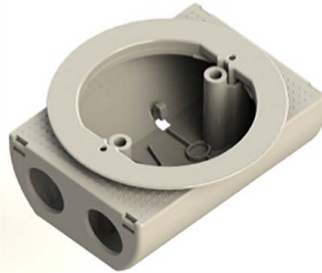
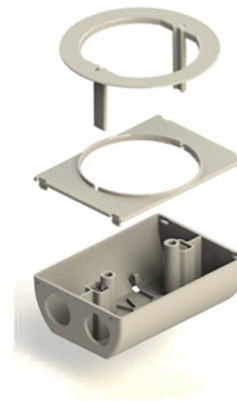


DL-PRO

Mounting Box Data Sheet



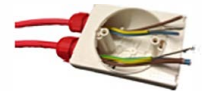
Part Number	Pn: 14-217
Description	Round Mounting Box
Designation	"H" - for installation into hollow type ceilings / walls
Tested & Approved to	BS EN60670-1:2005+A1:2013
Dimensions	Height 40 to 65 mm
	Width 71 mm
	Length 100 mm
To Fit Aperture size	Dia 72 mm
Entry points	2 x 20mm pre-drilled holes 2 x 20mm pre-marked holes - use correct size hole saw to remove if required
To fit Board thickness	5 to 30 mm
Fixing Lugs	2 x M4 brass threaded inserts
Material	ABS AF312c - flame retardant ABS plastic



DL-PRO

Mounting Box - Installation Instructions

1. Select DL-PRO Box for required application
2. Install 2 x Glands & strip and insert cables into Back Box.
For additional holes, 2 x pre-marked hole locations are available. These are to be drilled out using appropriate hole saw if required.
3. Clip on Back Box Cover plate
4. Drill 72mm Dia hole in Location unit is to be installed
5. Locate back box behind hole and insert Flange plate from front of hole. Push fit flange into self locking location slots until unit is secure.
6. Fit accessory using 2 x M4 screws as required



For surface mounting

- Two screw mounting points are provided within the box
- Box to be fixed using 2 x No6 screws
- Once box secured follow steps 3 & 6 above

