

SNDEXT-4

4 way monitored sounder circuit extension card

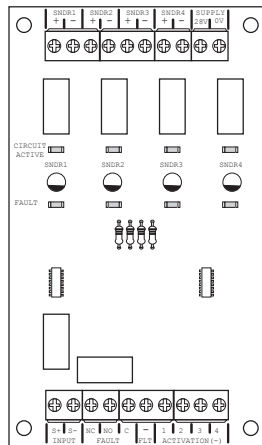
PRODUCT OVERVIEW

SNDEXT-4 has been designed to provide a sounder circuit extension solution. The card has 4 monitored and fused sounder circuits. There are switched negative inputs to trigger all circuits (common) or each circuit individually, a relay is also provided for remote fault monitoring. The fault relay will operate for all faults including loss of 24v supply input.

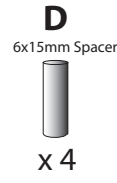
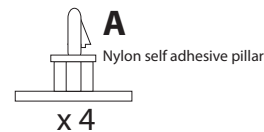
The card is driven from an existing sounder circuit in the control panel. A permanent 28v supply is required. If used with a Haes Excel-EN control panel, this supply can be taken from the 28v output on the main circuit board.

Each circuit is fused at 0.75 amp via self healing fuses and requires a 4K7 end of line monitoring resistor (provided).

PARTS INCLUDED

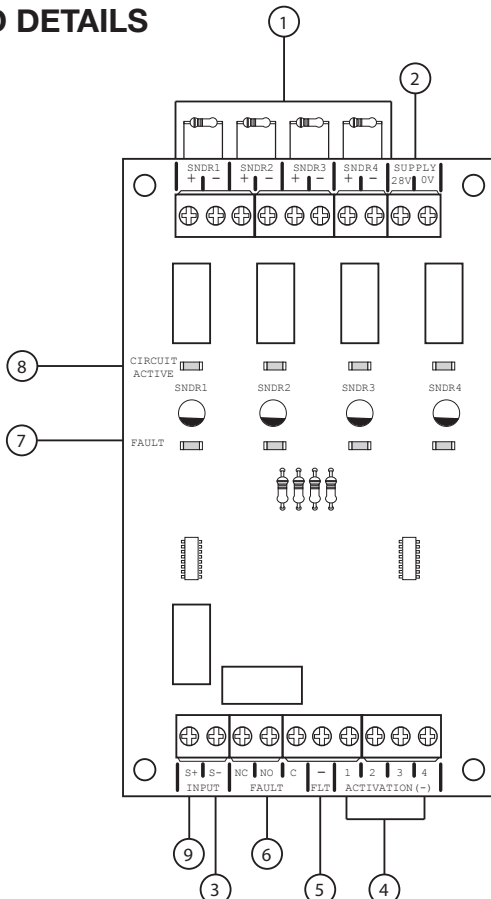


TPCA09



Fixing Kit

CARD DETAILS



| | |
|----------|--|
| 1 | Monitored sounder circuits, fused at 0.75 amp, 4K7 end of line resistor |
| 2 | 28v supply input |
| 3 | Switched negative input for common sounder circuit ringing (subject to link from 28v supply to S+) |
| 4 | Switched negative inputs for activation of individual sounder circuits 1 - 4 |
| 5 | Switched negative common fault output |
| 6 | Fault relay, NO/NC changeover (fail safe) |
| 7 | Sounder circuit fault LED indicators, open or short circuit |
| 8 | Sounder circuit active LED indicators |
| 9 | S+, S-, sounder circuit drive input |

INSTALLATION

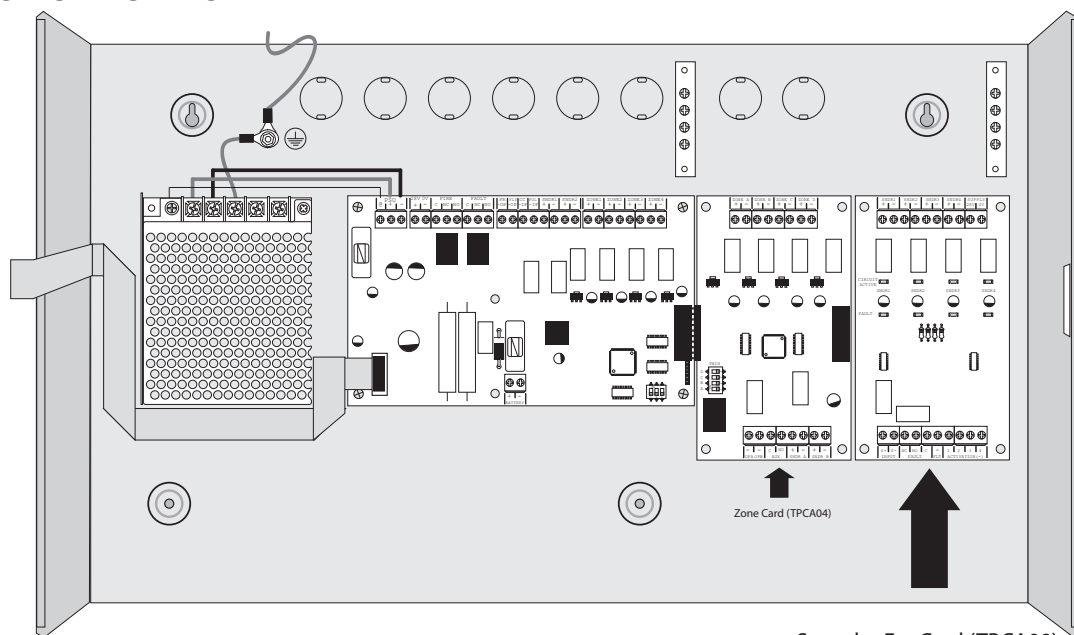
The sounder circuit extension card has been designed to utilise an existing sounder circuit and is therefore compatible with most makes of conventional fire alarm control panel.

Four, self adhesive, nylon, mounting pillars (A) are provided to enable the card to be mounted into a suitable space.

If, however, the card is to be mounted into a Haes, Excel-EN control panel, it has been designed specifically to fit neatly into a zone card slot and fixed using 4 x M3x6 screws (B) as provided.

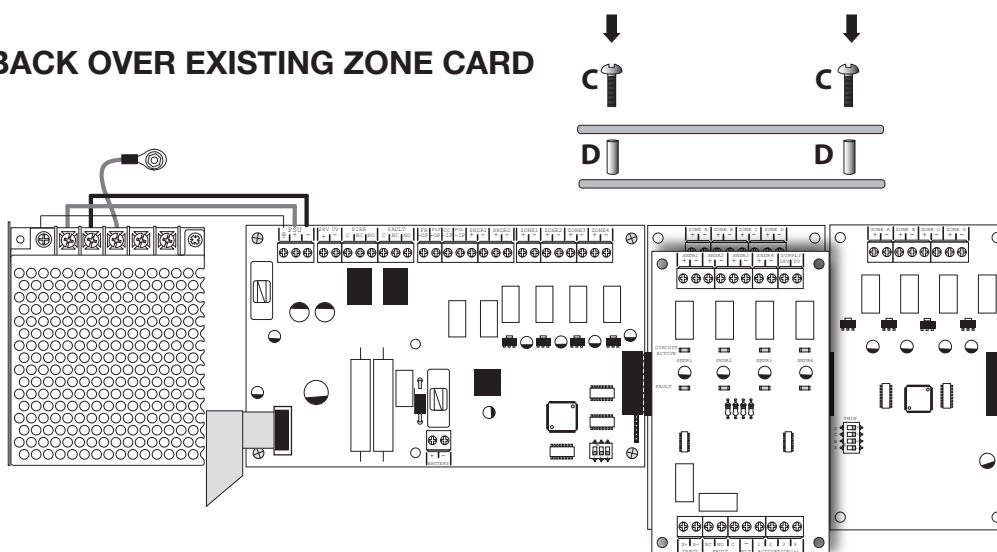
Alternatively, if the Excel-EN is fully loaded, the sounder circuit card can be piggy backed over an existing zone card using 4 x M3x25 screws and 4 x 6x15mm spacers (C & D) as provided.

FIT IN PLACE OF ZONE CARD



Sounder Ext Card (TPCA09)
Fix using 4 x M3x6 screws (B)
as provided

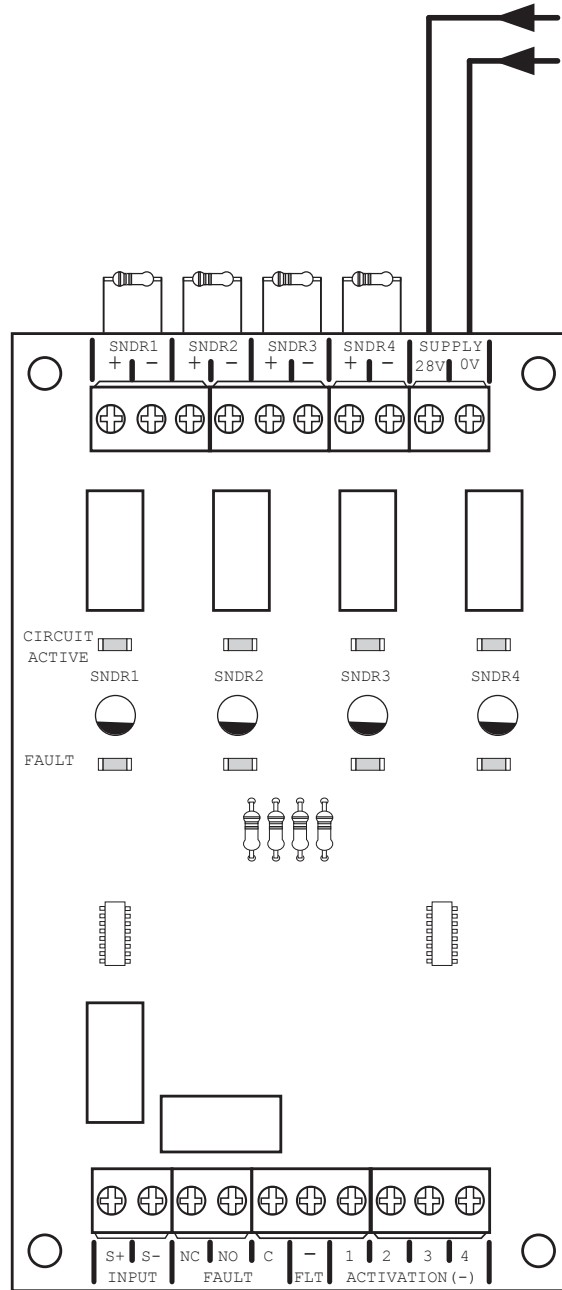
PIGGY BACK OVER EXISTING ZONE CARD



Piggy back sounder card
ontop of existing zone card
and fix using 4 x M3x25 screws and 6x15mm spacers
as provided

CONNECTION DETAILS FOR COMMON SOUNDER RINGING FROM EXISTING SOUNDER CCT

Permanent 28v supply
 Can use 28v O/P from Excel-EN
 main PCB (500mA)
 or seperate power supply unit.



Existing Sounder CCT +
 -
 EOL Sndr CCT

CONNECTION DETAILS UTILISING INDIVIDUAL SWITCHED NEGATIVE CONTROL

