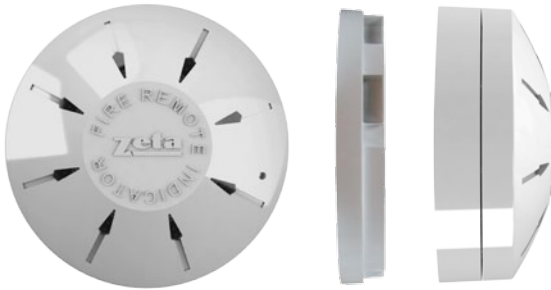


Remote LED Indicators

(MKII-ARL/W & MKII-ARL/C)



MKII-ARL/C

MKII-CB



MKII-ARL/W

There are two models for the remote LED indicator, a wall type MKII-ARL/W and ceiling mounted type (requires a base) MKII-ARL/C.

Each unit is equipped with 8 LEDs and mimics the detector LED in alarm condition.

Features

- ✓ The indicators can be hard addressed via 8 way dip-switch OR
- ✓ Softly addressed using the MKII handheld programmer
- ✓ Each indicator can be programmed for one device or up to 12 devices
- ✓ Each indicator will be connected directly on to the detection loop

Model	MKII-ARL/W	MKII-ARL/C
Part No.	48-034	48-033
Quiescent Current	450µA	450µA
Alarm current	2.10mA	2.10mA
Dimensions (mm)	(W) 85.5 x (H) 85.5 x (D) 60	(Dia) 100 x (D) 40
IP Rating	IP43	IP43
System Voltage	17 to 28 Vdc	17 to 28Vdc

